

## Program Funding Sources:

Major funding for the programs of Rainbow Fleet is provided by:

- Oklahoma Child Care Resource and Referral Association, Oklahoma Child Care Services, Oklahoma State Department of Human Services
- Child and Adult Care Food Program, Oklahoma State Department of Education, USDA
- Inasmuch Foundation
- Oklahoma City Community Foundation
- Robert A. Parman Foundation
- Anschutz Foundation
- Chickasaw Nation

For more information about our programs and services, or to learn more about how to contribute time, talent or resources, please contact:



Rainbow Fleet Child Care Resource and Referral  
3024 Paseo  
Oklahoma City, OK 73103-1021  
Office: 405-521-1426 Fax: 405-521-1472



*Serving children and families in central Oklahoma  
since 1972*



## Mission and Goals

Rainbow Fleet strives to provide innovative, educational child development programs that enhance the quality of life for children, their families and child care professionals.

In support of its mission, Rainbow Fleet's Board of Directors have set five strategic goals for 2011-2015.

- Provide services to child care professionals, parents and

### Rainbow Fleet Child



families that promote early childhood development, health, safety and innovative practices in the child care environment

- Maintain and enhance the financial viability of Rainbow Fleet
- Increase the public awareness of Rainbow Fleet and its services in central Oklahoma
- Recruit and retain high quality staff for Rainbow Fleet
- Maintain a proactive, visionary, mission-driven Board of Directors



*"Rainbow Fleet taught me what to look for in choosing quality care for my kids."*  
- Jonathan DeLeon, Parent.

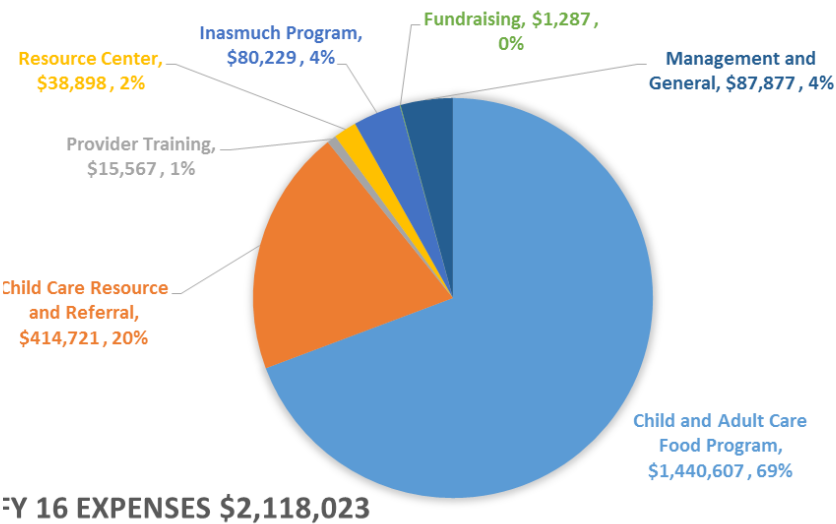
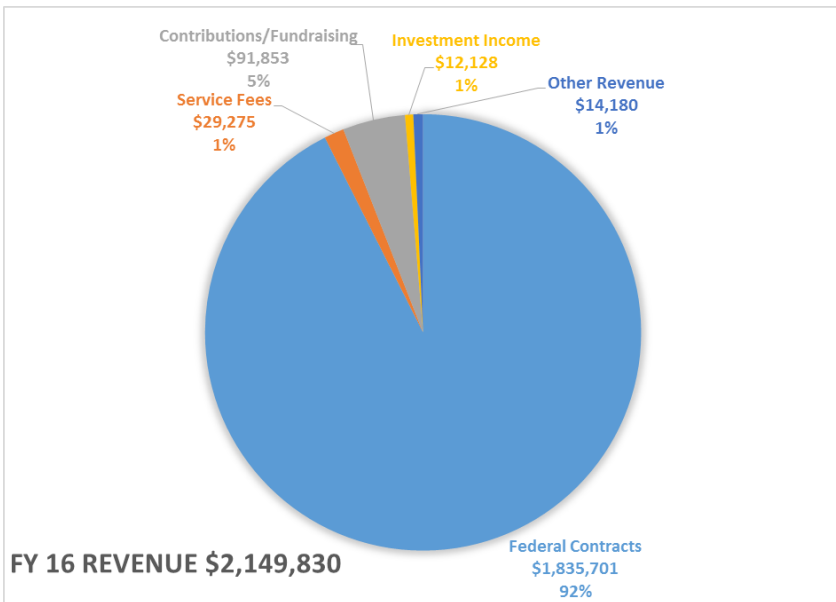
## Professional Affiliations and Memberships:



**CHILD & ADULT CARE FOOD PROGRAM**



## Finances At a Glance



### Rainbow Fleet Board of Directors

**President:** Mike Gibson

**President Elect:** Becky Roten

**Secretary:** Matilda Clements

**Treasurer:** Shelley Deck

### Advisory Board Members:

Kelly Padgham

Laura Pringle

Peggy Loeffler, Founder Emeritus

### Directors:

Adrianne Butler

Kathy Carey

Mei Cheng

Drew Edmonson

Morgan Harris

Patti Tepper-Rasmussen

Diana Vermeire

Cara Anderson



## Rainbow Fleet's Programs

### Child Care Resource and Referral

Rainbow Fleet's Child Care Specialists provide consultations with families and the community in an effort to provide the most current and accurate information about child care options, quality indicators and related resources. Rainbow Fleet provides training opportunities and technical assistance to child care providers to increase the quality of care for children in central Oklahoma.

### Child and Adult Care Food Program

As a sponsoring organization with the Child and Adult Care Food Program, we provide nutritional training and processing of claims for meal reimbursements for family child care home providers who are licensed through the Oklahoma Department of Human Services. The goal of this program is to ensure that children in family child care homes are served nutritious meals and snacks that meet USDA guidelines. The CACFP targets low-income areas by utilizing a tiered reimbursement system, granting higher reimbursements to those living in low-income areas.

### Child Care Resource Center

We offer parents, families and child care providers suggestions, consultations and technical assistance on appropriate activities, curriculum, educational materials and resources for children in a unique library setting.

### Child Care Training Workshops

We coordinate training and consultation to assist child care providers in meeting training requirements for licensing and other levels of early childhood professional development. We offer training such as First Aid/CPR, Accident and Disease Prevention and Sensory Ideas for infants and toddlers.

### Hispanic Services

Our Hispanic Referral Specialist is bilingual and provides referral assistance and consumer education to our Hispanic population.

### Quality Enhancement Initiative

Our Quality Enhancement Specialist improves the quality of care in family child care homes through mentoring and onsite training.

## Rainbow Fleet Resource Center

Rainbow Fleet provides access to a resource lending library containing materials that support and assist in providing quality early education. Currently, the resource lending library is housed in an 1,100 square foot section of the Rainbow Fleet Corporate Offices and includes over 1,000 children's books; over 700 books on Child Care and Child Development; learning games and play activities; developmental toys and educational games; art ideas and teaching themes; recycling ideas; access to die cut and laminating machines.



## Child and Adult Care Food Program

Rainbow Fleet is a sponsor organization for more than 160 family child care home providers located in Canadian, Cleveland, Garvin, Grady, Kingfisher, Lincoln, Logan, McClain, Oklahoma and Pottawatomie Counties with more than 2,100 children participating in the Child and Adult Care Food Program:

Average Number Providers Claiming:	141
Average Number Children Claimed:	1,658
Total Number of Meals/Snacks Served:	854,773
Total Dollars Reimbursed for Meals:	\$1,265,114



Our website provides information about our services and links to additional resources that support children, families and child care professionals.

[www.rainbowfleet.org](http://www.rainbowfleet.org)

## FY 2016 Program Staff: (as of June 30, 2015)

### Executive Director

**Carrie Williams**

### Child Care Resource and Referral

**Taffy Henderson**, Resource and Referral Manager

**Heather Calton**, Referral Specialist

**Lisa Oliver**, Child Care Specialist

**Randa Wood**, Statewide Referral Specialist

### Hispanic Services

**Florencia Briglie**, Referral Specialist

### Child Care Food Program

**Jamie England**, Food Program Coordinator

**Alfreda Little**, Food Program Monitor

### Quality Enhancement Initiative (QEI)

**Heather Mellor**, Program Specialist

### Administrative Assistant

**Sharon Bates**

### Accountant

**Daphne Padilla**

## FY 2016 Service Facts

Our Child Care Resource and Referral service delivery area of Cleveland and Oklahoma Counties includes:

Child Population age 0-12	178,800
# Children with Working Parents	117,743
% with Working Parents	66%
# Child Care Centers	469
# Family Child Care Homes	661
*2014 State Summary Oklahoma Child Care and Early Education Portfolio	

Our services include providing the following assistance through telephone communication and consultation with families and child care providers:

Calls Requesting Referrals	2,061
Calls Requesting Other Information	40
Spanish Referral Calls	50
Provider Technical Assistance	145
Online Referrals	370
Technical Assistance Provided:	225.91 hours

## FY 2016 Service Facts

Child care providers come to Rainbow Fleet for trainings, workshops and consultation that will assist them in meeting training requirements for licensing, improving the quality of care in their environment, and other levels of early childhood professional training and development:

Number of Trainings	259
Number of Participants	1,402

Rainbow Fleet maintains visibility in the community by hosting and participating in events attended by families and other stakeholders in the child care community, advertising in local and social media outlets and distributing brochures and monthly newsletters. Additionally, Rainbow Fleet's staff provides information to state and federal legislators.

Stakeholder Meetings Attended	28
Community Collaborations with ECE	28
Community Events Attended	28
Legislative Contacts Made	43